

# TCAPS Montessori Update

Board of Education Meeting  
May 14, 2020

# Estimated Student Population

## Toddler - 8th Grade

- Toddler 2 classrooms
- Children's House 5 classrooms
- Lower Elementary 6 classrooms
- Upper Elementary 6 classrooms
- Adolescent 3 classrooms

Total: 22 classrooms

Student capacity: approximately 500-550

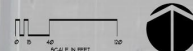
*By standardizing the class sizes and design from Children's House to Adolescent, it allows future flexibility and provides options every year for how each room will be used based on the population.*

# LEGEND

- PROPOSED BUILDING
- PROPOSED ASPHALT PAVING
- PROPOSED CONCRETE SIDEWALKS
- WETLANDS



FOR REVIEW ONLY  
NOT FOR CONSTRUCTION



KALAMAZOO OFFICE  
412 South Park Street  
Kalamazoo, Michigan 49007  
GRAND RAPIDS OFFICE  
111 West Myer, Suite 100  
Grand Rapids, Michigan 49503

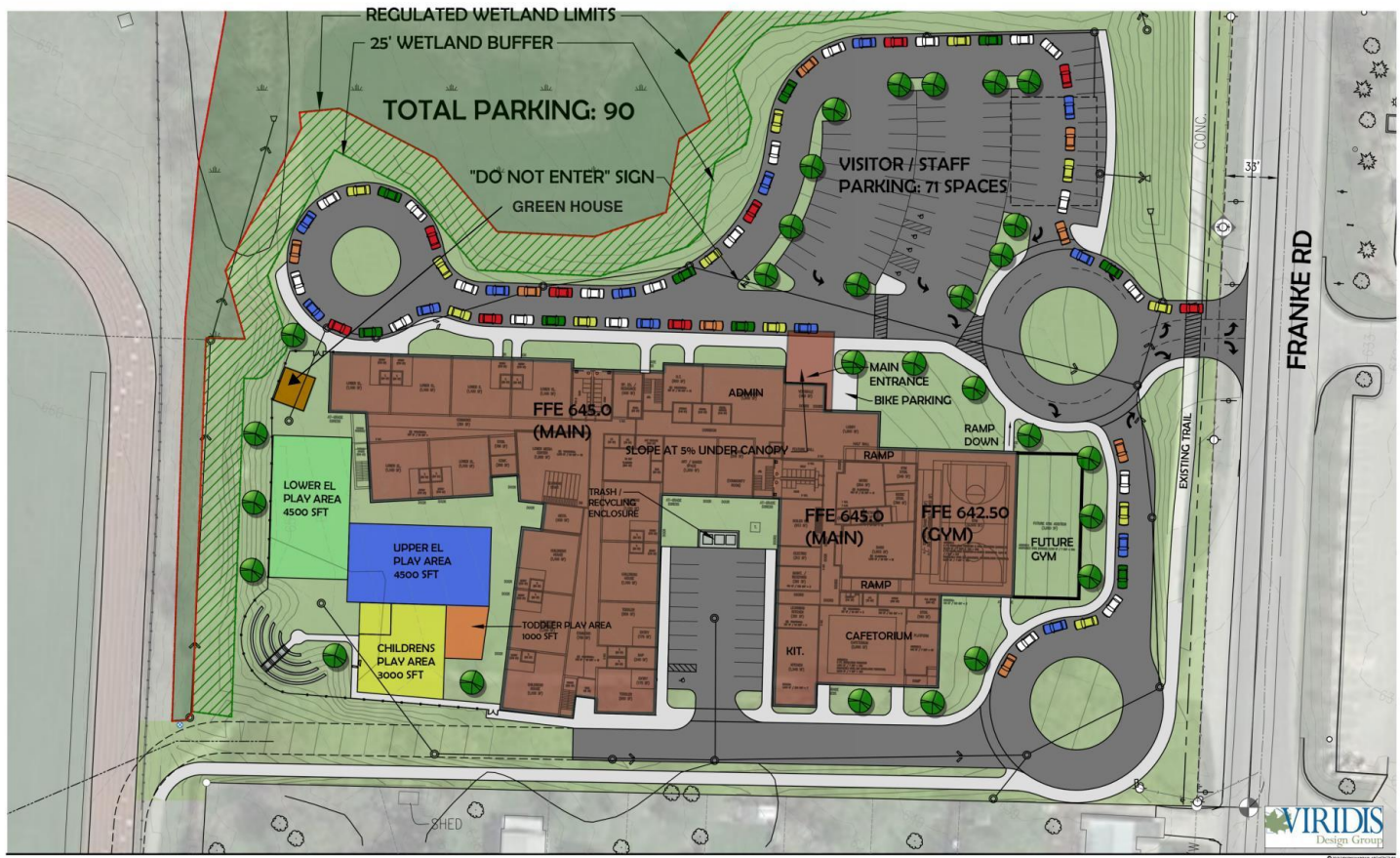
NEW MONTGOMERY SCHOOL  
TRAVERSE CITY AREA PUBLIC SCHOOLS  
1000 WEST WASHINGTON  
TRAVERSE CITY, MICHIGAN

MAY 7, 2020

CONCEPT #1  
SITE PLAN

SC-1  
CONCEPT

TRAVERSE CITY AREA PUBLIC SCHOOLS  
1000 WEST WASHINGTON  
TRAVERSE CITY, MICHIGAN 49601  
© 2020 TRAVERSE CITY AREA PUBLIC SCHOOLS



TRAVERSE CITY AREA PUBLIC SCHOOLS - MONTESSORI SCHOOL  
SCHEMATIC DESIGN  
MAY 15, 2020



CORNWELL  
ARCHITECTS



DIEKEMA HAMANN  
architecture & engineering



- |   |   |   |
|---|---|---|
| <span style="display: inline-block; width: 20px; height: 10px; background-color: #e0ffff; border: 1px solid black;"></span> CLASSROOM / VOCATIONAL                            | <span style="display: inline-block; width: 20px; height: 10px; background-color: #ffff00; border: 1px solid black;"></span> MUSIC / BAND                | <span style="display: inline-block; width: 20px; height: 10px; background-color: #0000ff; border: 1px solid black;"></span> COMMONS |
| <span style="display: inline-block; width: 20px; height: 10px; background-color: #ff00ff; border: 1px solid black;"></span> RESOURCE / SPECIAL ED. /<br>CONFERENCE / PLANNING | <span style="display: inline-block; width: 20px; height: 10px; background-color: #ffa500; border: 1px solid black;"></span> CAFETERIUM                  |   |
| <span style="display: inline-block; width: 20px; height: 10px; background-color: #8000ff; border: 1px solid black;"></span> ADMINISTRATION / OFFICE                           | <span style="display: inline-block; width: 20px; height: 10px; background-color: #add8e6; border: 1px solid black;"></span> GYM                         |   |
| <span style="display: inline-block; width: 20px; height: 10px; background-color: #90ee90; border: 1px solid black;"></span> MEDIA CENTER                                      | <span style="display: inline-block; width: 20px; height: 10px; background-color: #808080; border: 1px solid black;"></span> SUPPORT / TOILETS / STORAGE |   |



FIRST LEVEL PLAN



TRAVERSE CITY AREA PUBLIC SCHOOLS - MONTESSORI SCHOOL  
SCHEMATIC DESIGN  
MAY 14, 2020



DIEKEMA HAMANN  
architecture & engineering



- |   |   |   |
|---|---|---|
| <span style="display: inline-block; width: 20px; height: 10px; background-color: #E0FFFF; border: 1px solid black;"></span> CLASSROOM / VOCATIONAL                            | <span style="display: inline-block; width: 20px; height: 10px; background-color: #FFFF00; border: 1px solid black;"></span> MUSIC / BAND                | <span style="display: inline-block; width: 20px; height: 10px; background-color: #ADD8E6; border: 1px solid black;"></span> COMMONS |
| <span style="display: inline-block; width: 20px; height: 10px; background-color: #FFB6C1; border: 1px solid black;"></span> RESOURCE / SPECIAL ED. /<br>CONFERENCE / PLANNING | <span style="display: inline-block; width: 20px; height: 10px; background-color: #FFDAB9; border: 1px solid black;"></span> CAFETORIUM                  |   |
| <span style="display: inline-block; width: 20px; height: 10px; background-color: #DDA0DD; border: 1px solid black;"></span> ADMINISTRATION / OFFICE                           | <span style="display: inline-block; width: 20px; height: 10px; background-color: #ADD8E6; border: 1px solid black;"></span> GYM                         |   |
| <span style="display: inline-block; width: 20px; height: 10px; background-color: #90EE90; border: 1px solid black;"></span> MEDIA CENTER                                      | <span style="display: inline-block; width: 20px; height: 10px; background-color: #808080; border: 1px solid black;"></span> SUPPORT / TOILETS / STORAGE |   |



SECOND LEVEL PLAN



TRAVERSE CITY AREA PUBLIC SCHOOLS - MONTESSORI SCHOOL  
SCHEMATIC DESIGN  
MAY 14, 2020

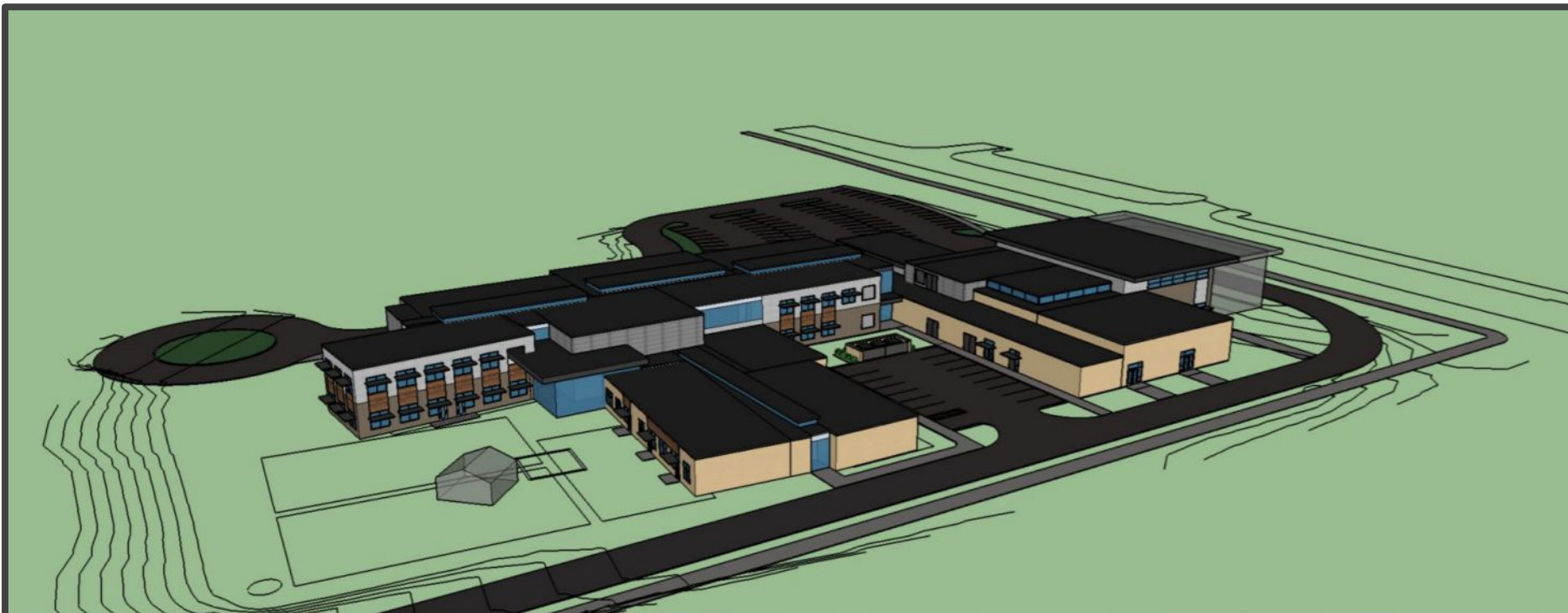


DIEKEMA HAMANN  
architecture & engineering



PRELIMINARY  
NOT FOR  
CONSTRUCTION



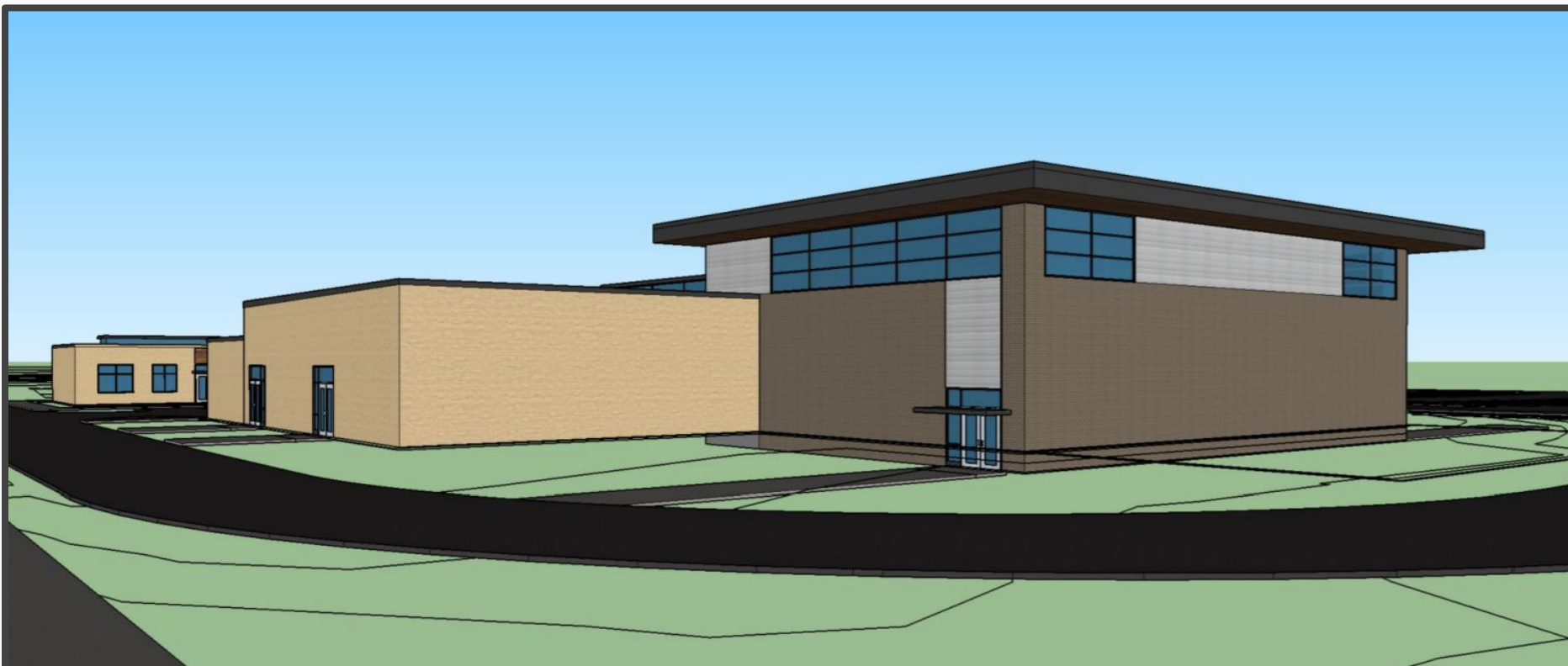
















# Next Steps:

Virtual parent meeting on Thursday, May 21, 2020

Continue to review with Garfield Township, Grand Traverse County Road Commission, and Environment, Great Lakes & Energy (EGLE) (formally DEQ), etc.

Review initial budget estimates from Miller-Davis

Establish the project budget based on cost estimates

- Review cost containment ideas
- Discuss needs and efficiencies to handle future needs of the district

**Design Development:** 6/9/20 - 9/14/20 - see website for details

**Construction Documents:** 09/15/20 - 12/21/20

**Pre-Construction:** 01/04/21 - 02/22/21

**Construction:** 03/01/21 - 06/24/22

**Occupancy:** 06/27/22 - 07/01/22